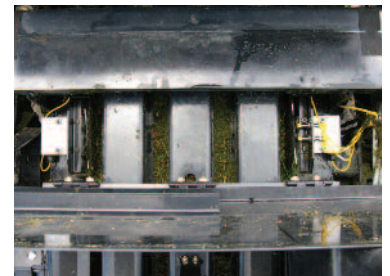
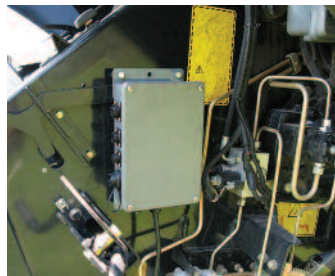


## Dealer Fit Options

### Moisture Monitor

Part Number: PFC-0600C2

The Moisture Monitor system links directly into the baler's CAN harness to link directly through to the ISOBUS monitor. Components of the kit will include: ECU processor, limited downloadable job records, interface harness, star wheels, moisture harness and fitting hardware.



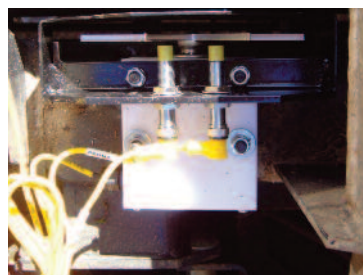
The Moisture Monitor can be easily and quickly installed to Case large balers, which are built with mounting and fixing holes in the baler frame. To upgrade from Moisture Monitor to Moisture Pro, please add Part number PFC-0665C1 and a software upgrade.

### Moisture Pro

Part Number: PFC-0665BBE

Moisture Pro links directly to the baler's CAN with the additional sensors and harnesses to add other Thirty Plus components.

Components of the kit will include: ECU processor, full downloadable job records, interface harness, star wheels, moisture harness, fitting hardware, proximity sensors, end bale sensor, power harness, communication harness.



Moisture Pro is easily installed to all Case large square balers. If the baler is an older LBX series and does not have an AFX Pro terminal or the tractor does not have a free ISOBUS plug then the ThirtyPlus Bluetooth interface to link to the customer's iPad will be required (Part Number PFC-6672A).

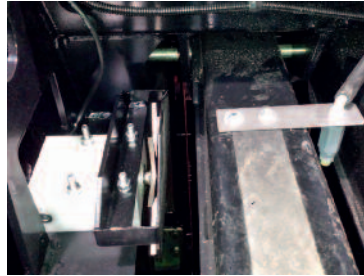
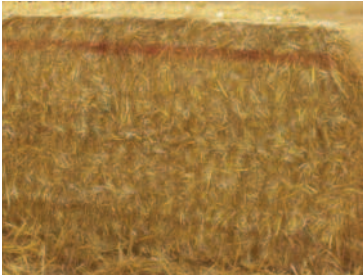
### Moisture Monitor and Moisture Pro Benefits:

- 1: Market leader with accurate moisture readings within 1% (competitive pads within 3-5% on straw and 5-8% on hay).
- 2: 8-72% moisture range in all crops with no calibration required.
- 3: Read moisture through the full width of the bale (9 readings per second averaged every 3 seconds).

## Bale Marker

Part Number: 030-0840

The Bale Marker will plug directly into the Moisture Pro unit. Depending on the alarm moisture level set by the operator, a red food grade colour is sprayed through two nozzles onto the wet flakes within a bale that are above the alarm point. The nozzles can be mounted in several positions on the bale chamber depending on the customer's requirements. The Bale Marker is suitable with any large or small square baler with a Moisture Pro unit. The red colour for the marker is Part Number 030-0800 (10 pots per unit ordered).



### Bale Marker benefits:

- 1: Cheap cost effective way to manage high moisture in the bales.
- 2: During the stacking process bales can easily be separated and sorted by moisture level.

## ThirtyPlus Applicator and ThirtyPlus preservative

Part Number: PFC-696BB\*\*\*\*B

ThirtyPlus preservative Part Number: BC200TP (200 litres) BC1000TP (1000 litres)

The applicator allows the ThirtyPlus preservative to be accurately applied to hay and straw, preventing mould growth and spoilage in the stack. It is particularly suited to high quality hay and straw production. The moisture meter is part of this complete ThirtyPlus applicator. The applicator will take weight and bale length readings if these options have been installed on the baler. The ThirtyPlus preservative is manufactured to be machinery safe and stronger litre to litre than any other acid on the market. With ThirtyPlus, hay and straw can be baled between 16-27% moisture with no mould (small square and round 16-30% moisture).



### ThirtyPlus Benefits:

- 1: On average 1 day earlier baling of hay
- 2: Gets the baler closer behind the combine
- 3: Complete job download via USB and viewable using Microsoft Excel
- 4: On average 30% more baling per day
- 5: Complete automated variable rate application with auto on/off and ISOBUS integration through the baler's electronics on all Case LB balers.

For all other balers, to confirm the correct fitting kit please email make, model and pick-up type to get the correct part number.

For further information please contact your Case IH Harvesting Specialist at PFC.

For more information:  
Tel: +44 (0)1805 603363  
Email: [info@pfc-eu.com](mailto:info@pfc-eu.com)

